

# BOND UPDATE

April 2024

#ThankYouVoters

# WALLER JUNIOR HIGH

**PHASE 1 COMPLETION SUMMER 2023**

**PHASE 2 COMPLETION SUMMER 2024**



---

# WALLER JUNIOR HIGH

---

- New north and west parking lot were poured. Site cleanup in progress.
- Renovations are ongoing in classroom areas with paint and ceiling grid.
- Phase 2 addition mason is complete. Exterior metal panels to start in April.
- All exterior window frames and glass are installed. Temporary entry doors
- Installation of wall tile is ongoing in main corridors and restrooms.
- Roofing of the Phase 2 addition is complete.
- Overhead electrical, HVAC, plumbing, and fire sprinklers is 95% complete in Phase 2.
- HVAC equipment started and building has conditioned air.



# WALLER JUNIOR HIGH



Phase 2 Addition and Main Entry

**WALLER ISD**  
**CONSTRUCTION**





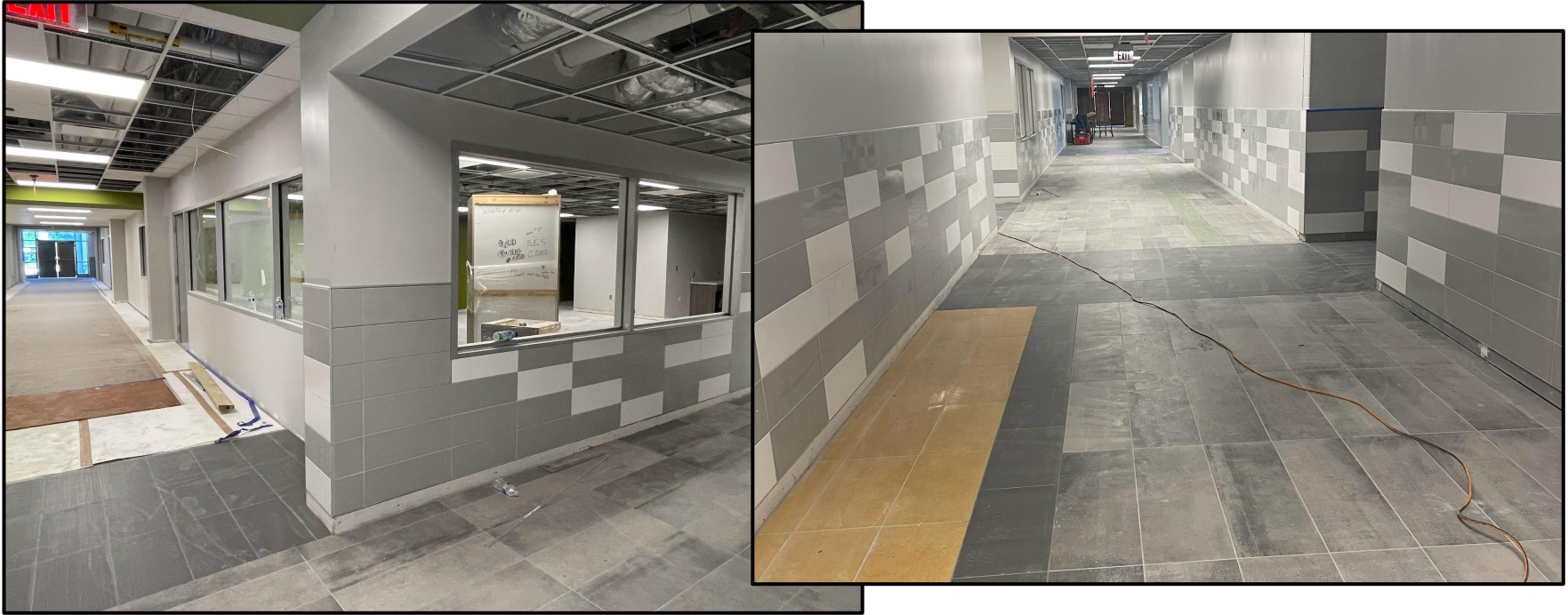
Art Courtyard and Marquee

# WALLER JUNIOR HIGH



Auditorium Stage and Control Booth





Main Corridor and PLC Room



# WALLER JUNIOR HIGH



Band Hall & Standard Classroom



Art Classroom & Collaboration



# WALLER JUNIOR HIGH



Collaboration Area



- Sidewalks are being poured and canopies are in progress.
- Metal wall panel and window installations are nearing completion.
- Storefront windows and doors are in being installed.
- Finishes are ongoing including wall tile, paint, and casework.
- Ceiling devices are being installed.
- Lights are being turned on.
- Basketball goals are being installed at the gyms.
- Food service equipment installations are ongoing.

# LOWE ELEMENTARY - #6

## DELLROSE





Front Entry and Canopy



# LOWE ELEMENTARY

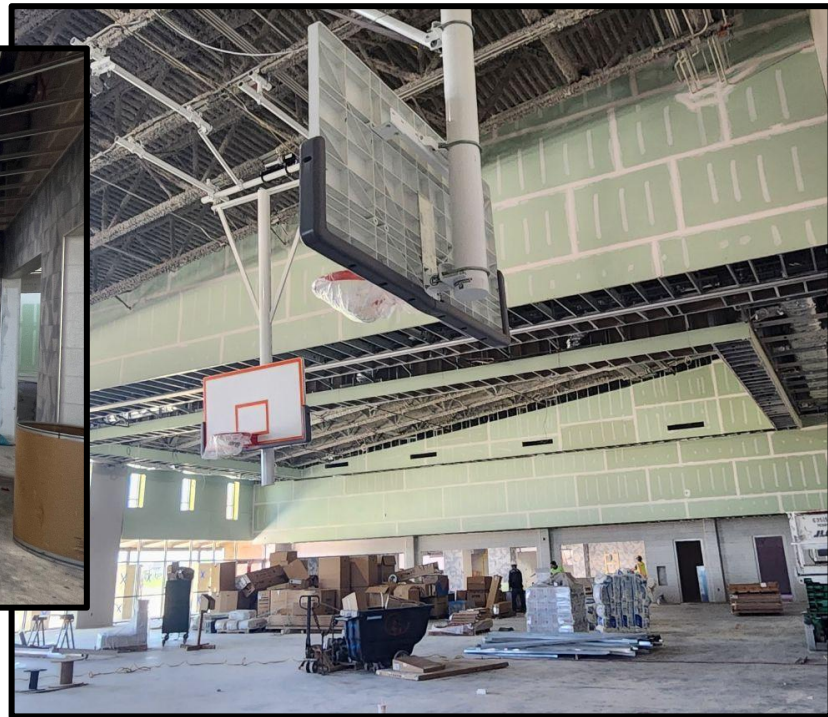


Classroom wing exterior and Science  
lab canopy

# LOWE ELEMENTARY



Gym/Cafeteria







Wall tile in progress



# LOWE ELEMENTARY



Classroom corridors

# **MCREAVY ELEMENTARY - #7**

## **BRIDGELAND**



# MCREAVY ELEMENTARY



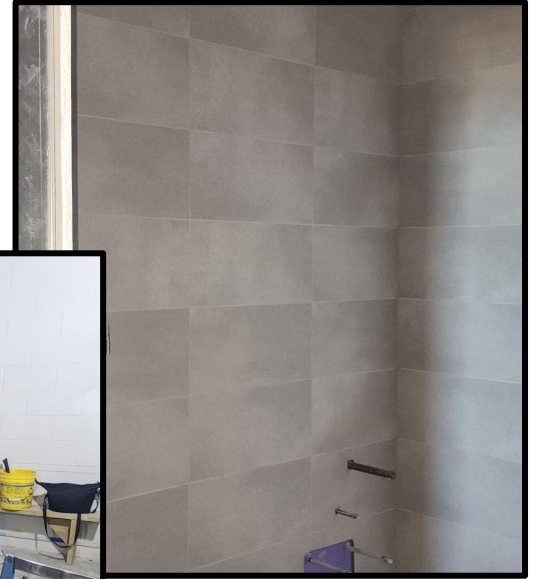
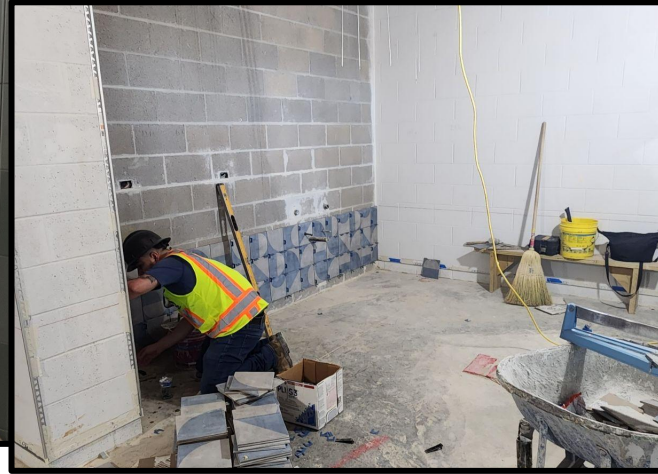
Front Entry



# MCREAVY ELEMENTARY



Exterior Paving



Wall Tile Progress





Classroom Corridors



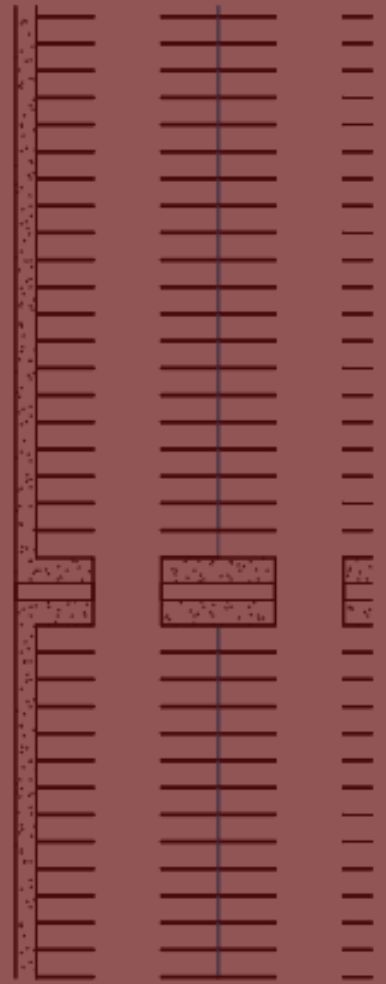
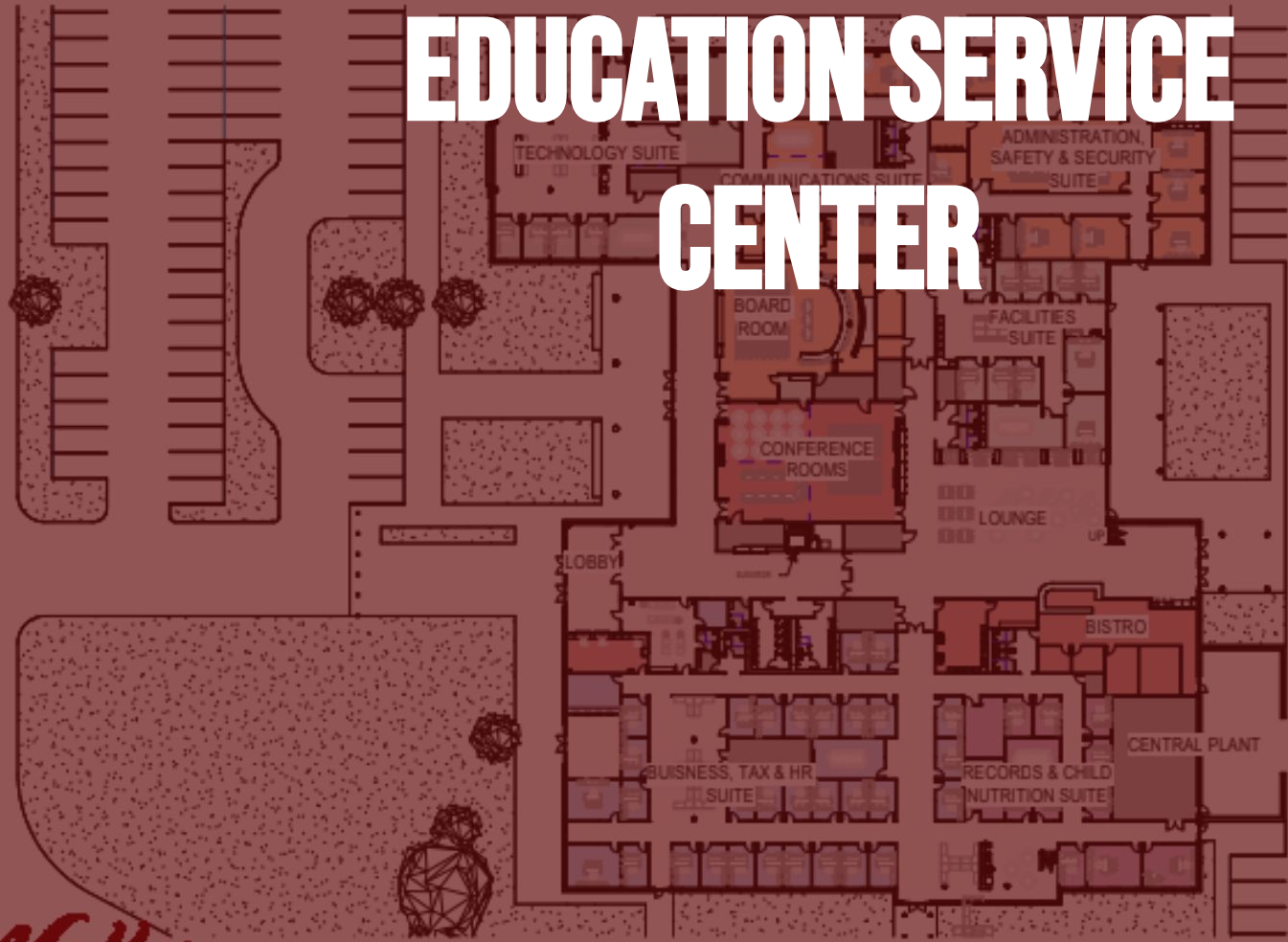
Media Center





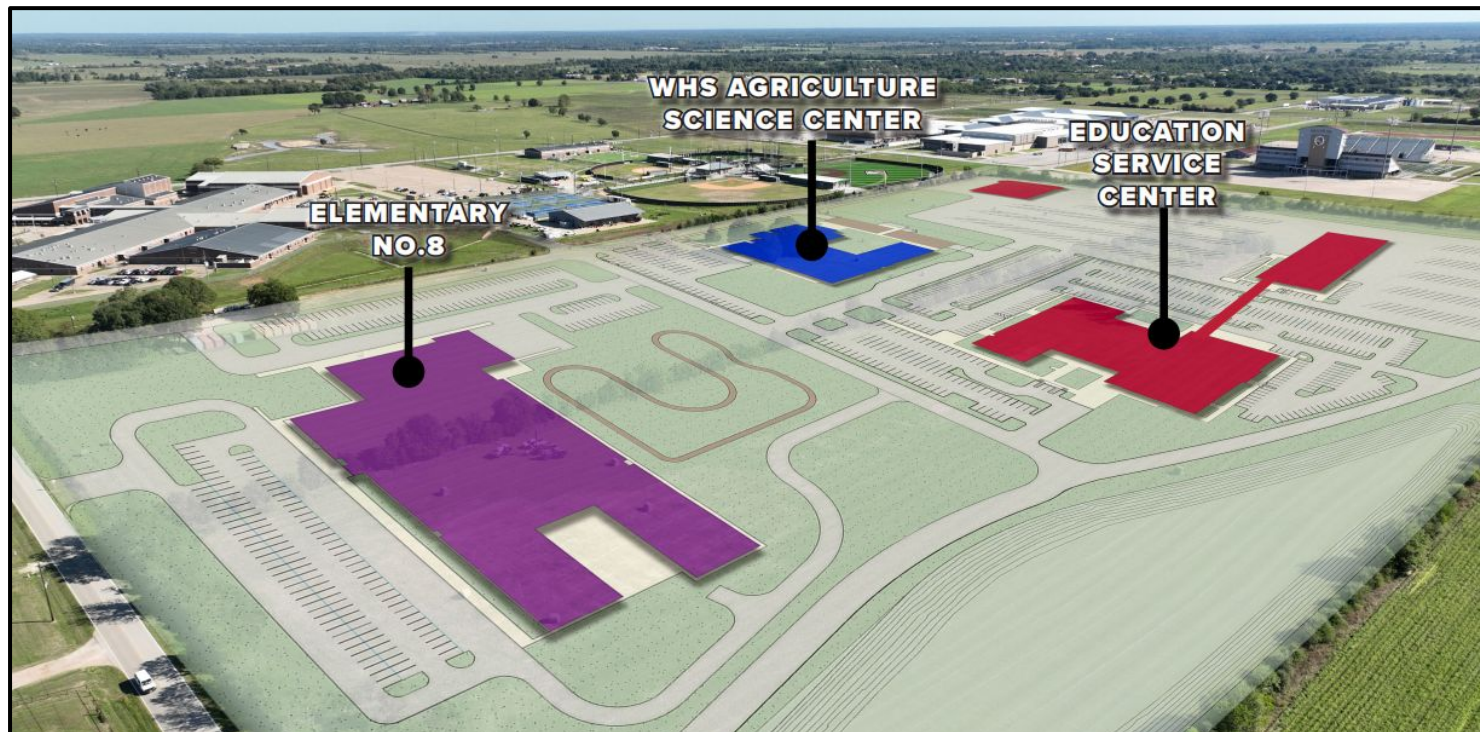
Administration

# EDUCATION SERVICE CENTER





- Sitework has started on the ESC-Transportation-Ag-Elementary #8 project.
- Detention pond is 95% complete.
- Site fence, silt fence, and tree protection installed.
- Pier drilling has begun.
- Ag Science Metal Building has been ordered.
- Stewart Builders jobsite office trailer is completed.



Site Layout





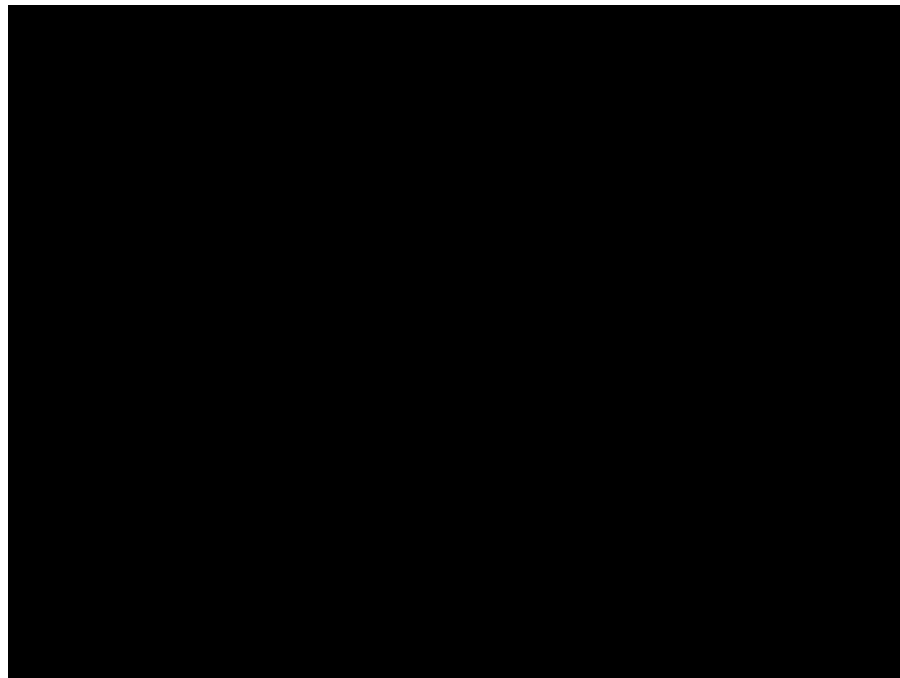
Aerial View - Looking Southeast



# ESC-Ag-Elementary #8



Aerial View - Looking Southwest



Aerial Drone Video



A photograph of a classroom filled with children of various ages, from young children to teenagers. They are all expressing excitement, with many having their arms raised in the air. The children are seated at small, light-colored tables with blue chairs. The classroom has white walls, a tiled ceiling, and various educational posters and supplies visible in the background. The entire image is overlaid with a semi-transparent red filter.

# #ThankYouVoters

*Waller*  
Independent School District